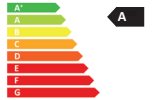




RHINOCOMFORT 3

SINGLE-ROOM MVHR WITH AIR SANITIZATION

- Nominal diameter 160 mm
- Humidity, air quality, twilight, and temperature sensors
- Photocatalytic system with zero ozone emissions for **sanitizing** incoming outdoor air
- Configuration and control via APP with multi-connectivity system: WiFi and Bluetooth Low Energy 5.0
- Wall-mounted on perimeter wall
- High-efficiency regenerative ceramic heat exchanger (up to 90%)
- Summer free-cooling



RHINOCOMFORT 3 ensures a constant supply of clean air indoors without the need to open windows, thereby preventing the formation of humidity and mold while improving air quality and overall comfort.

Inside the unit, there is a high-efficiency regenerative ceramic heat exchanger capable of storing the heat from outgoing air and reusing it to warm the incoming air. This process allows energy recovery and prevents unnecessary heat loss.

RHINOCOMFORT 3 is equipped with an ISO COARSE efficiency class filter, which traps impurities from the incoming air, and a low-consumption DC brushless motor controlled by a microprocessor.

The motor processes data from onboard sensors that monitor temperature, air quality (IAQ), humidity, and light levels. These sensors allow the unit to automatically adjust ventilation modes to ensure optimal indoor comfort.

In addition to the benefits of mechanical ventilation with heat recovery, RHINOCOMFORT 3 features an advanced air sanitization system. The incoming air is sanitized using a photocatalysis process with zero ozone emissions, which breaks down harmful substances and converts them into harmless elements. When the sanitization function is activated, RHINOCOMFORT 3 eliminates up to 99.6% of viruses and bacteria, reduces concentrations of PM2.5, PM10, and volatile organic compounds (VOCs), and prevents mold and humidity formation.

Thanks to its integrated multi-connectivity, RHINOCOMFORT 3 interfaces with the Intelliclima+ app, enabling complete configuration and management of both ventilation functions and Fantini Cosmi smart chronothermostats, creating a fully integrated smart home system.

The unit is designed for installation on perimeter walls but also delivers optimal performance when installed with ducting up to 3 linear meters or 2.5 meters with one bend.

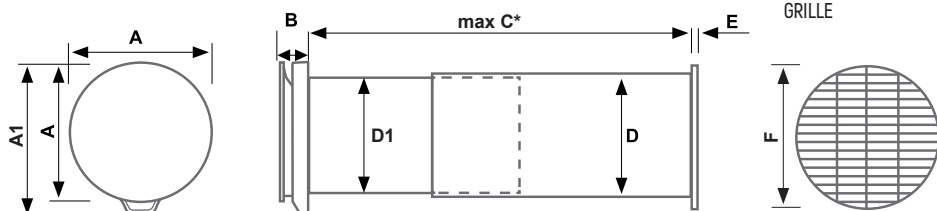
TECHNICAL FEATURES

Code		AP19997			
Duct diameter (mm)		DN 160			
Power supply		110÷230 Vac ~ 50/60Hz			
Airflow rate (m ³ /h)	Speed 1			30	
	Speed 2			50	
	Speed 3			75	
	Sleep mode (night)			15	
	Boost speed (*)			100	
Power consumption (W)	Speed 1	3		8,5	
	Speed 2	5		10,5	
	Speed 3	8		14,5	
	Sleep mode (night)	2,5		8	
	Boost speed (*)	20		--	
Sound level [dB(A)]	Speed 1	20,5		15,0	
	Speed 2	29,5		23,5	
	Speed 3	37,0		31,5	
	Sleep mode (night)	n.d.		n.d.	
	Boost speed (*)	45,8		40,5	
Operating temperature		-20°C ÷ +50°C			
Filter classification		ISO COARSE			
IP rating		X4			
Heat recovery efficiency		Up to 90%			

^(*) Speed not manually selectable

DIMENSIONS (mm)

VENTILATION UNIT WITH HEAT RECOVERY



MODEL	A	A1	B	C	D1	D	E	F
RHINOCOMFORT 3	230	250	55	280 ÷ 530	150 (∅ external)	156 (∅ external)	20	190
					154 (∅ internal)	160 (∅ internal)		

For wall thicknesses between 250 mm and 280 mm, cut the pipe and use a standard external grille (not included)

FEATURES:

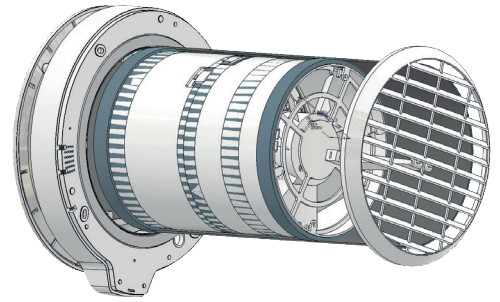
- Power supply: 230V~ 50Hz
- Plastics made of UV-resistant and antistatic ABS
- Operating temperature: -20°C to 50°C
- Compact size and easy installation
- Shockproof PVC telescopic pipe
- Foldable external grille for installation from inside or outside
- Panel for acoustic, thermal, and anti-condensation insulation
- Protection rating: IPX4

THE AP19997 PACKAGE INCLUDES:

- Internal unit with magnetic front cover;
- Ventilation cartridge with heat recovery and sanitation system;
- Telescopic pipe;
- External grille;
- User manual

VENTILATION CARTRIDGE WITH SANITIZATION

- Helical fan/ventilator and DC Brushless motor
- Regenerative ceramic heat exchanger with efficiency up to 90%
- High-power UV-C and UV-A LEDs for air sanitization
- ISO Coarse filtration class filter according to UNI EN ISO 16890:2017
- Humidity sensor
- Twilight sensor
- Airflow temperature sensor
- Indoor air quality and CO₂ sensor



CONNECTIVITY

- Transmission frequency: WiFi 2.4 GHz
- Bluetooth Low Energy 5.0
- Remote firmware update via APP.

ACCESSORIES AND SPARE PARTS:

- ISO Coarse class filters according to UNI EN ISO 16890:2017 (AP1984)
- Panel for acoustic, thermal, and anti-condensation insulation (AP1985)
- Windproof and rainproof grille (code AP1613)
- External noise reduction kit (code AP19881).

RHINOCOMFORT 3 can be configured to operate either as a main unit or as an additional unit. When set as an additional unit, the rotation direction is configured to be either in agreement or opposition to the main unit. All units communicate with each other via Bluetooth Low Energy protocol and are managed through the Intellilima+ app. The units can be installed in large spaces or in different rooms (maximum signal range approximately 8-10 meters in open environments).

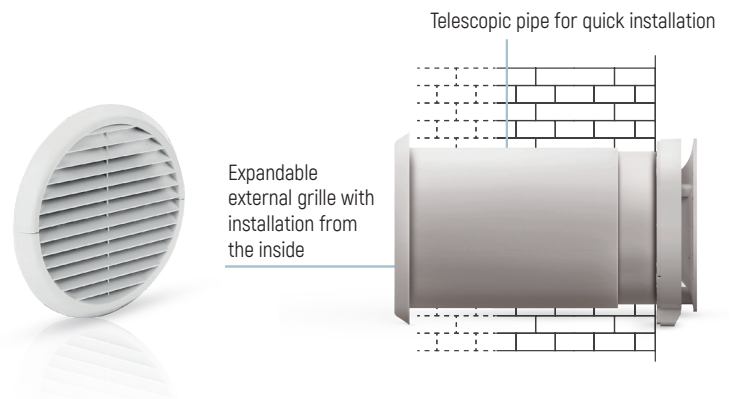
INSTALLATION

The RHINOCOMFORT 3 ventilation unit must be installed on perimeter walls.

Thanks to the telescopic pipe, it easily adapts to all wall thicknesses from a minimum of 25 cm [*] up to a maximum of 53 cm.

Moreover, installation is extremely quick and easy, also thanks to the expandable external grille that can be mounted from the inside.

[*] When installing the AP19881 kit, a minimum wall thickness of 45 cm is required.

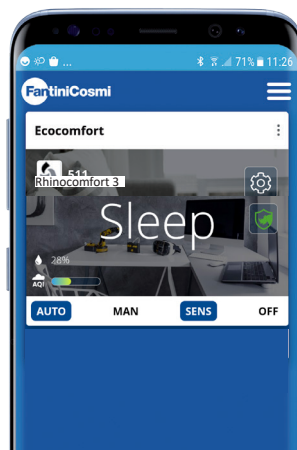


REMOTE CONTROL VIA APP

RHINOCOMFORT 3 can be configured and managed via smartphone using the Intellilima+ app.

The multi-connectivity system allows control of the ventilation unit both locally via Bluetooth and remotely via WiFi.

■ EXAMPLE



The Intellilima+ app is available for free on:



OPERATION

■ MANUAL mode setting:

In this mode, it is possible to select the operating speed settings:

V3 - high speed

V2 - medium speed

V1 - low speed

SLEEP - minimum speed (night mode)

and to set the operating cycle:

 Air supply (temporary mode for 60 minutes)

 Air extraction (temporary mode for 60 minutes)

 Alternating supply/extraction flow with 45-second cycles

 Supplies/extracts air from the environment while recovering heat, automatically optimizing cycle intervals based on thresholds set on the eCO₂, humidity, and twilight sensors, as well as the detected temperature.

■ AUTO mode setting

The unit follows a daily schedule, setting speed parameters (VEL 1 - VEL 2 - VEL 3 - SLEEP**) and Off every half hour. Air supply/extraction and heat recovery are optimized through automatic cycle intervals.

In this operating mode, the SENSOR function is always active: the unit supplies/extracts air from the environment while recovering heat, automatically optimizing speed and cycle intervals based on thresholds set on the sensors.

■ Sanitization function setting

 From the app's main screen, it is possible to activate and deactivate the air sanitization function.

ADVANCED FUNCTIONS

RHINOCOMFORT 3 is a smart ventilation and extraction unit designed to provide an advanced approach to comfort management.

In addition to the benefits of mechanical ventilation with heat recovery, RHINOCOMFORT 3 features an advanced air sanitization system. The unit's components are specially treated with a nanotechnology product that, through a unique and innovative technology combining high-power UV-C and UV-A LEDs with a zero-ozone-emission **photocatalysis process**, **sanitizes incoming outdoor air by breaking down harmful substances and converting them into harmless, healthy particles**. Activating the sanitization function, RHINOCOMFORT 3 **eliminates up to 99.6% of viruses and bacteria, reduces concentrations of PM2.5, PM10, and volatile organic compounds (VOCs), and prevents the formation of mold and humidity**.

The SENSOR function enables automated management that reduces primary energy demand, with real-time data accessible via the intuitive infographics in the Intelliclima+ app, where you can monitor:

- Indoor temperature
- Ambient humidity
- Air quality
- Consumption trends

During summer months, the FREE-COOLING function automatically activates when the outdoor temperature is lower than the indoor temperature, contributing to better thermal comfort without waste.

Advanced connectivity with the Intelliclima+ app integrates RHINOCOMFORT 3 into a complete smart home system, allowing synchronized management of ventilation, heating, and cooling systems in a simple and intuitive way.



AIR SANITIZATION



GEOLOCATION



AUTO SMART SENSOR



SUMMER FREE COOLING



REMOTE CONTROL VIA APP



INTEGRATED WIFI



RED DA
COMPLIANT

ACCESSORIES

ISO COARSE FILTER

CODE	MODEL
------	-------

AP1984	FR007
--------	-------



INSULATING PANEL

CODE	MODEL
------	-------

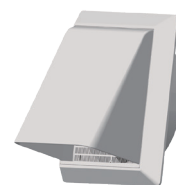
AP1985	FR008
--------	-------



RAINPROOF AND WINDPROOF GRILLE

CODE	MODEL
------	-------

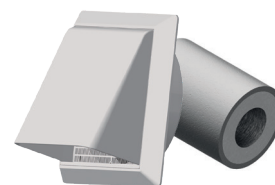
AP1613	GE150
--------	-------



EXTERNAL NOISE REDUCTION KIT

CODE	MODEL
------	-------

AP19881	SLF160
---------	--------



REGULATIONS AND CERTIFICATIONS

- Compliant with Directive 2014/53/EU (RED)
- Compliant with Directive 2009/125/EC Energy Related Products (ERP) - Ecodesign 2018
- Compliant with standards:
 - EN 60335-1:2013+A11:2015; EN 60335-2-80:2005+A2:2009
 - EN 55014-1:2006+A1:2009+A2:2011; EN 55014-2:2015
 - EN 61000-3-2:2014; EN 61000-3-3:2013
 - EN 301 489-1 V1.9.2; EN 301 489-7 V1.3.1
 - ETSI EN 300 220-1 V2.4.1; ETSI EN 300 220-2 V2.4.1
 - UNI EN ISO 10140-2 - UNI EN ISO 717-1



SPECIFICATION ITEM

Decentralized mechanical ventilation unit with high-efficiency ceramic heat recovery, equipped with smart functions and artificial intelligence. Multi-connectivity system via WiFi and Bluetooth Low Energy 5.0 for configuration and remote management through the Fantini Cosmi Intellilima+ app. Equipped with integrated sensors for room temperature, relative humidity, twilight, and indoor air quality (IAQ), enabling intelligent control and optimization of indoor comfort. Air sanitization function using photocatalysis with zero ozone emissions. Multifunction button with multicolor LED indicator. Operating modes: automatic, manual, smart sensor, off. Smart functions include geolocation, auto sensor, and free-cooling to reduce energy consumption and improve thermal and humidity comfort. Real-time reports available through the app for monitored parameters.

Designed for perimeter wall installation, with maximum wall thickness of 53 cm. Telescopic duct for wall thicknesses from 28 to 53 cm. High-efficiency ceramic heat exchanger with up to 90% recovery. Ultra-low power consumption DC brushless motor. Four fan speeds: Min, Med, Max, Sleep. Airflow rates: 30 mc/h, 50 mc/h, 75 mc/h + 15 mc/h. Power consumption: 3W, 5W, 8W, 2.5W. Power consumption with active sanitization: 8.5W, 10.5W, 14W, 8W. Sound pressure @ 1.5 m: 20.5 dB(A), 29.5 dB(A), 37 dB(A). Sound pressure @ 3 m: 15 dB(A), 23.5 dB(A), 31.5 dB(A). Power supply: 230Vac, Protection rating: IPX4. Melamine filter, ISO Coarse classification, according to UNI EN ISO 16890:2017. Supplied with expandable external grille for installation from inside. Optional accessories: rainproof and windproof external grille, external noise reduction kit. Energy Class A, in accordance with Regulation (EU) No. 1254/2014. Compliant with: Directive 2014/53/EU (RED); Directive 2009/125/EC – Energy Related Products (ERP), Ecodesign 2018; EN 60335-1:2013 + A11:2015; EN 60335-2-80:2005 + A2:2009; EN 61000-3-2:2018/A1:2020; EN 61000-3-3:2013; EN18031-1:2025; EN 301 489-1 V2.2.3; EN 301 489-17 V3.2.4; ETSI EN 300 328 V2.2.2